



Creating a New Account and Accessing the InCal Database

Calibration files are available from this web site for InPower Pro users. This website should only be accessed using one of the following internet browsers.

- Internet Explorer
- Mozilla Firefox

InCal calibration files are available at:

<http://www.cumminspower.com>

At the top of the screen is the statement “Choose your re-

gion.” Click on **North America** → **United States** (see Figure 1). The Cummins Power Generation (CPG) website for North America is displayed (see Figure 2). Be sure to add this web site to your list of favorites.

Before you can download calibration files, you must first create a new account. This process includes contacting a system administrator to approve your request. Once your request is approved, you will be notified when you are authorized to search for and download files.

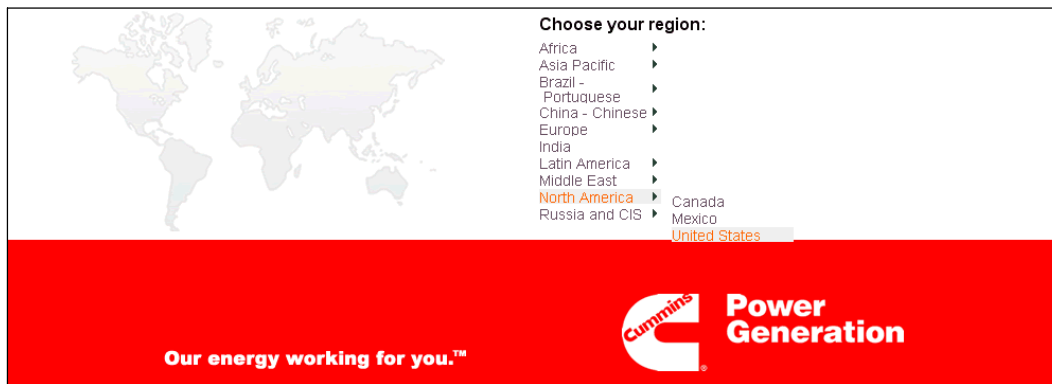


FIGURE 1. THE CUMMINS POWER GENERATION WEBSITE



FIGURE 2. ACCESSING THE CUMMINS POWER GENERATION WEBSITE FOR DOWNLOADING INCAL FILES

CREATING A NEW ACCOUNT

The InCal software distribution website is intended for InPower users at a global level who support Cummins products and services. Users of the website may include Cummins employees or Guests (non-Cummins employees). Portions of the registration procedure vary, depending upon whether or not you are a Cummins employee or a Guest.

Creating a new account includes registration and setting up a password.

1. From the CPG home page (see Figure 2), click on the **Services** heading and go to **Software** → **Incal Quick Links** → **New Registration**. The New Registration dialog is displayed (see Figure 3).
2. Fill in the appropriate information. To avoid having your request delayed or rejected, be sure to complete the registration information accurately, as outlined below.

Cummins Employees:

- Enter your WWID (World Wide Identification) into the UserID
- Enter your Cummins e-mail address in the <First.LastName@cummins.com> format.
- DO NOT use your WWID@cummins.com format.

- Entering the appropriate information will prompt our system to register your WWID. Once your request is approved, you will be granted access to the InCal website using your standard Cummins password (WWIMS – World Wide Identify Management).

- Optional – Enter your dongle serial number.

Guests (All Other Users):

- Enter any “UserID” you refer, using at least six characters.
- Enter an e-mail address that does not contain @cummins.com.
- After approval has been granted, you will be sent an e-mail link in order to register your password and establish password recovery information.

3. Click on the **Register** button.

- a. If you had previously signed up for CPG services, you may be prompted that your ID already exists in the environment (see Figure 4). If so, click on **OK** to continue.

- b. The message “Thank you for registering” is displayed (see Figure 5). Registration is complete.

4. Exit the web site.

Our energy working for you.™

New Reastration

[Search]

Change Region | Home | Products | Services | Customer Solutions | Technical Center/Library | Distributor Locator

Services:
Expand All | Collapse All
Power for Rent
Maintenance Programs
Warranty
Training
Parts / Operations Manual
Software
Incal Quick Links
New Registration
Administrator Login
Search and Download

Global Capabilities
Download our brochure, [click here.](#)

Rental Power
Download our brochure, [click here.](#)

PLEASE READ BELOW:

The InCal Software distribution website is intended for InPower users at a global level who support Cummins products and services. This website contains Calibration and Feature files only and does NOT contain any pricing or product marketing materials. The user population may consist of Cummins employees or Guests (non-Cummins employee) who are authorized for this type of application use. First determine if you are a Cummins employee or "Guest", then complete the registration information accurately as outlined below or it may result in delaying or rejecting your access request.

Cummins Employees:
- Enter your WWID (World Wide Identification) into the "UserID" category
- Enter your Cummins email address in **First.LastName@cummins.com** format
- Do NOT use your **WWID@cummins.com** format
- This will prompt the system to register your WWID. Once your request is approved, you will be granted access to the InCal Website using your standard Cummins password (WWIMS - World Wide Identify Management).

Guest - All Other Users (Non-Cummins employees):
- Enter any "UserID" you prefer with greater than 5 characters
- Enter any email address that does not contain @cummins.com
- After approval is granted you will then be sent an email link to be able to register your password and establish password recovery information.

User Download Guide

Register your profile here: [CPG Users click here to register](#)

Please provide the informations requested below:

First Name:

Last Name:

E Mail Address:

Company Name:

Mailing Address1:

Mailing Address2(Optional):

Country:

User Id:
(min. 5 characters)

Dongle Serial No (optional):

Always reliable
For service and support you can count on, [click here.](#)

EPA emissions regulations

To learn more, [click here.](#)

FIGURE 3. NEW REGISTRATION DIALOG

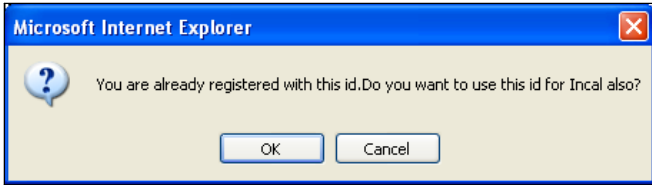


FIGURE 4. PRE-EXISTING ID NOTICE FOR CPG USERS

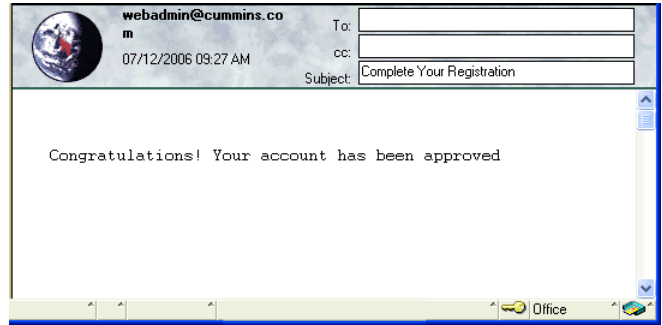


FIGURE 6. NOTICE TO COMPLETE YOUR REGISTRATION FOR CPG USERS



FIGURE 5. THANK YOU FOR REGISTERING MESSAGE

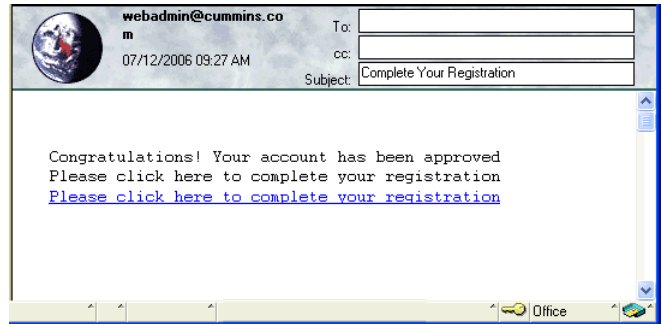


FIGURE 7. NOTICE TO COMPLETE YOUR REGISTRATION FOR GUEST USERS

5. Once your request has been processed, you will receive an e-mail from webadmin.com (for CPG users, see Figure 6; for Guest users, see Figure 7). Guest users should click on the link provided in the e-mail. The New Registration password dialog is displayed (see Figure 8).
6. Fill in the appropriate information (Password, Challenge Question, and Challenge Answer) and click on the **Register** button. The message “Your Registration process is already completed” is displayed. You may now return to the CPG InCal home page and download calibration files.



FIGURE 8. PASSWORD DIALOG

ACCESSING THE INCAL DATABASE

After you have received your user name and password, you can search for and download calibration files from the Cummins Power Generation website.

1. From the CPG home page (see Figure 2), click on the **Services** heading and go to **Software** → **Incal Quick Links** → **Search and Download**. The Cummins Online Login dialog is displayed (see Figure 9).
2. Enter the Username and Password established when you created a new account. When you click on the **Submit** button, a security alert message is displayed (see Figure 10).
3. Click on **Yes** to access the InCal database.

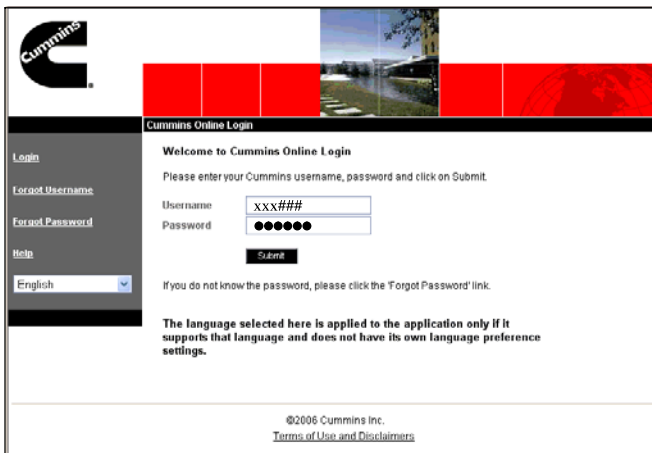


FIGURE 9. CUMMINS ONLINE LOGIN DIALOG

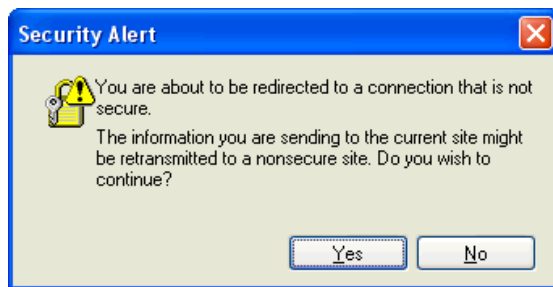


FIGURE 10. LOGIN SECURITY ALERT MESSAGE

DOWNLOADING CALIBRATION FILES

After entering the correct user name and password, you can then select the type of file(s) you wish to download. After **Yes** is selected on the security alert message (see Figure 10), the Search and Download dialog is displayed (see Figure 11).

The web site includes the following options for downloading files.

- Downloading a specific file for a device
- Downloading all files for a device (model)
- Downloading all files for all commercial devices
- Downloading all files for all consumer devices
- Downloading all files for all devices

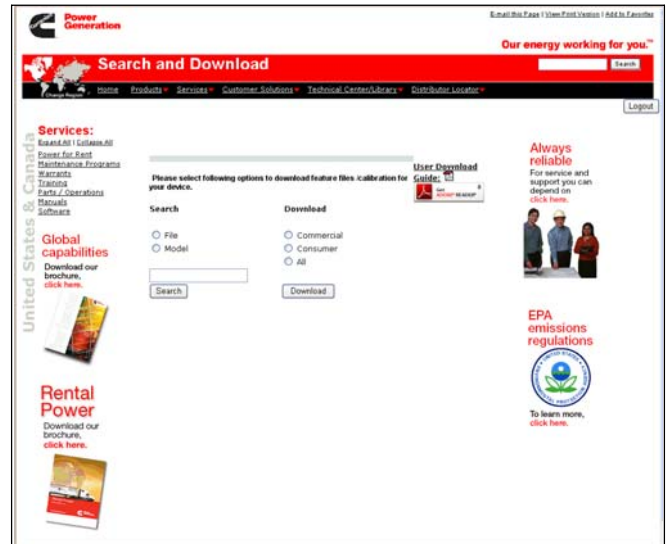


FIGURE 11. SEARCH AND DOWNLOAD DIALOG

Downloading a Calibration File

Two methods are available for downloading a specific calibration file.

Method A – Typing in a File Name

1. With **File** selected (default setting), type in a file name (see Figure 12).
2. Click on the **Search** button. The **Search Result** dialog is displayed (see Figure 13).

NOTE: If you type in a file name but fail to select **File** radio button before clicking on the **Search** button, the message below is displayed. Click on **OK** and select **File**.



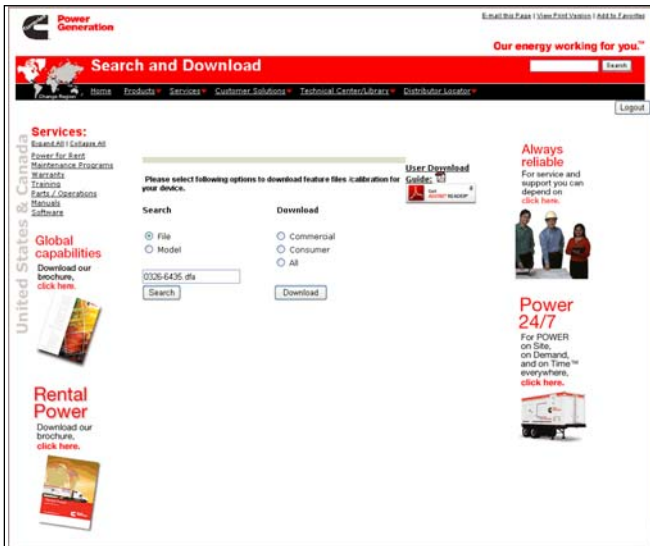


FIGURE 12. FILE SEARCH DIALOG

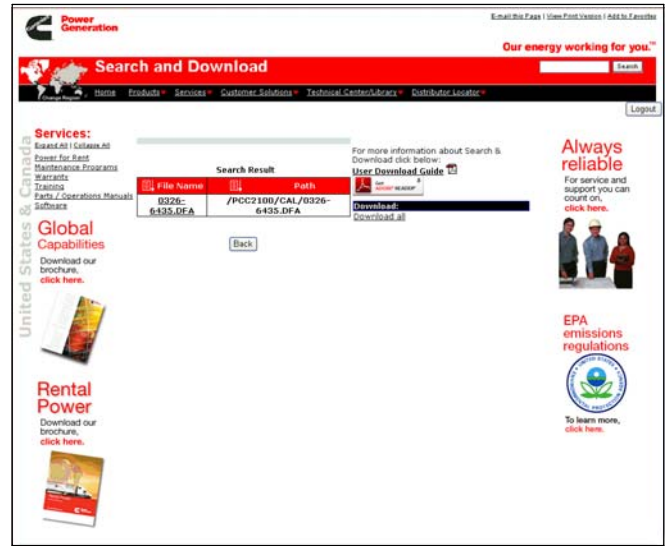


FIGURE 13. SEARCH RESULT DIALOG

3. Click on the file name. The **File Download** dialog is displayed (see Figure 14).
 - a If you select **Open**, a copy of the file is made available. There is no need for the user to view the contents of this file.
 - b If you select **Save**, a **Save As** dialog is displayed.
 - c If you select **Cancel**, the **Search Result** dialog is redisplayed.
 - d If you select **What's the Risk?**, online help on using the internet browser is displayed.
4. Click on **Save**.
5. The **Save As** dialog is displayed. If you do not wish to have the device files saved at the default location, navigate to the desired location. Click on **Save**.
6. The **Download complete** dialog is displayed. Click on **Open**.
7. The **WinZip Pro – filename.zip** dialog is displayed. Click on **Extract**.
8. Use the Folders/drives portion of the **Extract** dialog to navigate to the D drive (see Figure 15). Make sure “Use folder names” is checked. Click on the **Extract** icon.

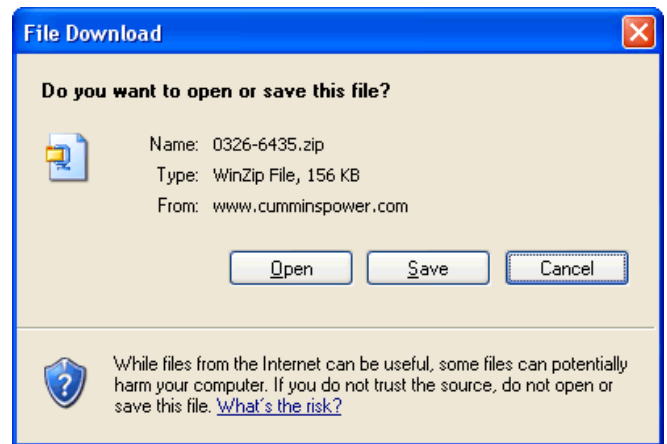


FIGURE 14. FILE DOWNLOAD DIALOG

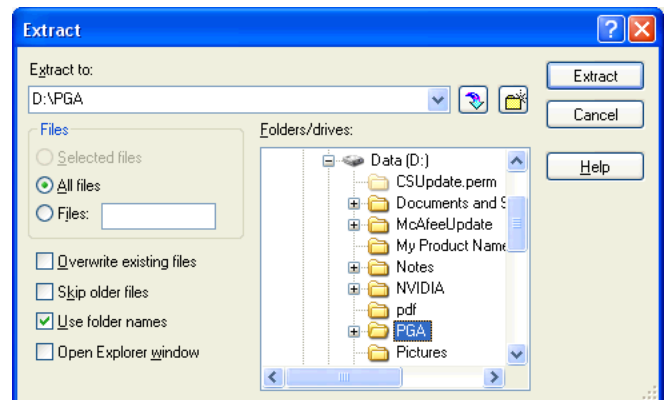


FIGURE 15. EXTRACT DIALOG

Method B – Selecting a Model

1. Select **Model** on the **Search** list shown in Figure 16.
2. Enter the device name (device names are listed on the following page).

NOTE: If an incorrect or non-existent name is entered, the message “The model name you have entered is not matched with a model” is displayed.

3. Click on the **Search** button. The **Search Result** dialog is displayed.

NOTE: If you type in a model name but fail to select **Model** before clicking on the **Search** button, the message “Please select the type to be searched” is displayed. Click on **OK** and select **Model**.

4. Click on the **+** to expand the device folder.
5. Click on the **+** to expand the subfolder that contains the desired file (see Figure 17).
6. Click on the desired file. The **File Download** dialog shown in Figure 14 is displayed.
7. Click on **Save**.
8. The **Save As** dialog is displayed. If you do not wish to have the device files saved at the default location, navigate to the desired location. Click on **Save**.
9. The **Download complete** dialog is displayed. Click on **Open**.
10. The **WinZip Pro – filename.zip** dialog is displayed. Click on **Extract**.
11. Use the Folders/drives portion of the **Extract** dialog to navigate to the D drive (see Figure 15). Make sure “Use folder names” is checked. Click on the **Extract** icon.

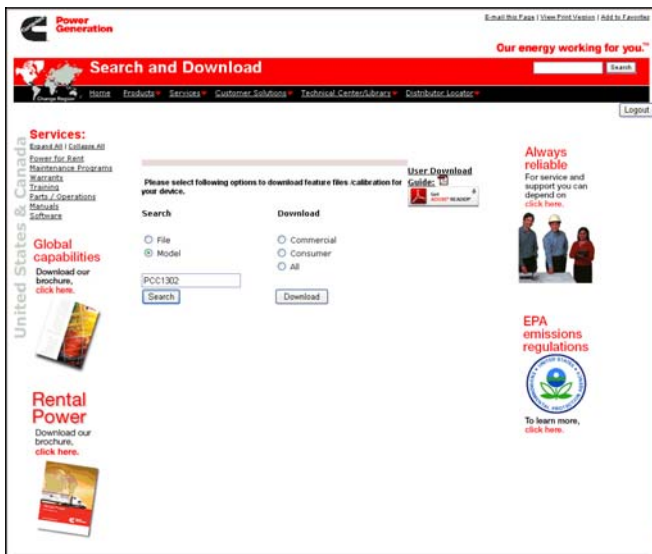


FIGURE 16. SEARCH AND DOWNLOAD DIALOG – MODEL SELECTION

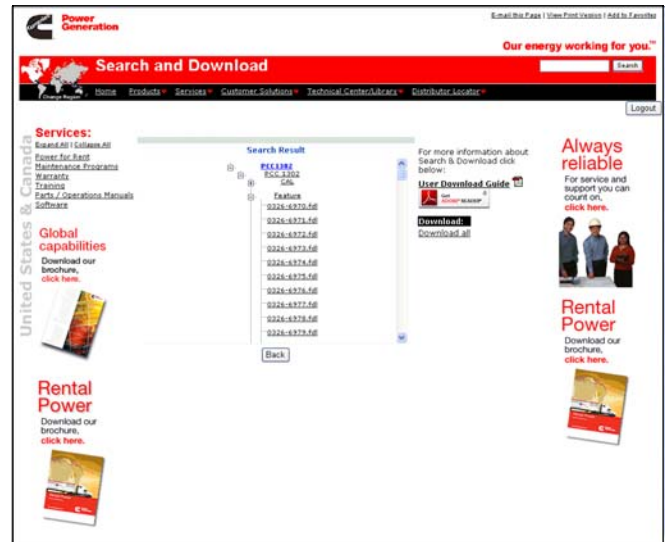


FIGURE 17. MODEL SEARCH RESULT DIALOG

Downloading All Calibration Files for a Device

To download all calibration files for a device (model),

1. Select **Model** in the **Search** list shown in Figure 16.
2. Enter the device name. The available devices are:

- QSK60
- QST30
- QSX15
- PCC3200
- OPPNL
- PCATS
- PCC2100
- MARINE
- PCC1100
- HQDECM
- HQDTS
- HQDLCD
- PCC1300
- LCDDYNAMOII
- CONSUMER
- MCC3320
- HQDINVERTER
- HDKAJ
- PCC1301
- PCC3300
- LCDDVC68
- LCDDVC70
- PCC1302
- GENERIC485
- HMI220
- HMI320

NOTE: The list of available device names is available by typing in an asterisk (*) in the device name field.

Make sure that **Model** is selected and then click on the **Search** button.

3. Click on the **Search** button. The Search Results screen is displayed (See Figure 17).

NOTE: If you type in a model name but fail to select **Model** before clicking on the **Search** button, the message “Please select the type to be searched” is displayed. Click on **OK** and select **Model**.

4. Click on the **Device / Model Name**. The File Download dialog shown in Figure 14 is displayed. Click on **Save**.
5. The **Save As** dialog is displayed. If you do not wish to have the device files saved at the default location, navigate to the desired location. Click on **Save**.
6. The **Download complete** dialog is displayed (see Figure 19). Click on **Open**.
7. The **WinZip Pro – device.zip** dialog is displayed. Click on **Extract**.
8. Use the Folders/drives portion of the **Extract** dialog to navigate to the D drive (see Figure 15). Make sure “Use folder names” is checked. Click on the **Extract** icon.

Downloading All Commercial or All Consumer Calibration Files

To download all commercial calibration files,

1. Select **Commercial** (or **Consumer**) in the **Download** list shown in Figure 11.
2. Click on the **Download** button. The File Download dialog is displayed (see Figure 14). Click on **Save**.
3. The **Save As** dialog is displayed (see Figure 18). If you do not wish to have the commercial (or consumer) files saved at the default location, navigate to the desired location. Click on **Save**.
4. The **Download complete** dialog is displayed (see Figure 19). Click on **Open**.
5. The **WinZip Pro – commercial.zip** (or **WinZip – consumer.zip**) dialog is displayed (see Figure 20). Click on **Extract**.
6. Use the Folders/drives portion of the **Extract** dialog to navigate to the D drive (see Figure 15). Make sure “Use folder names” is checked. Click on the **Extract** icon.

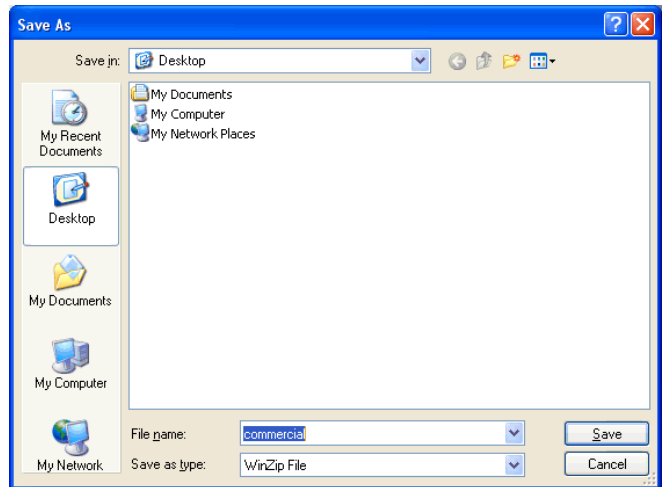


FIGURE 18. SAVE AS DIALOG – COMMERCIAL CALIBRATION FILES

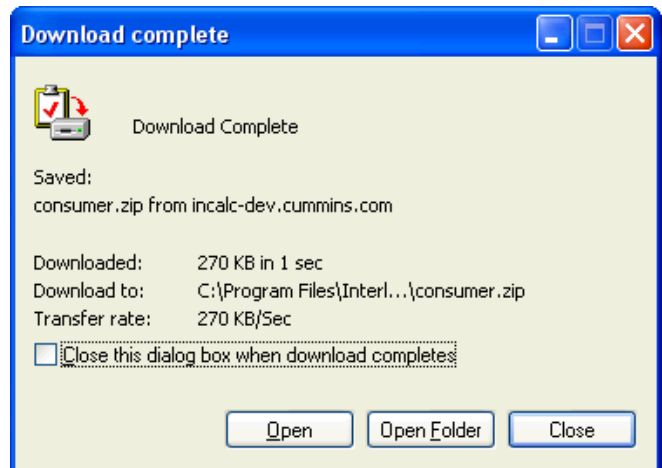


FIGURE 19. DOWNLOAD COMPLETE DIALOG – COMMERCIAL CALIBRATION FILES

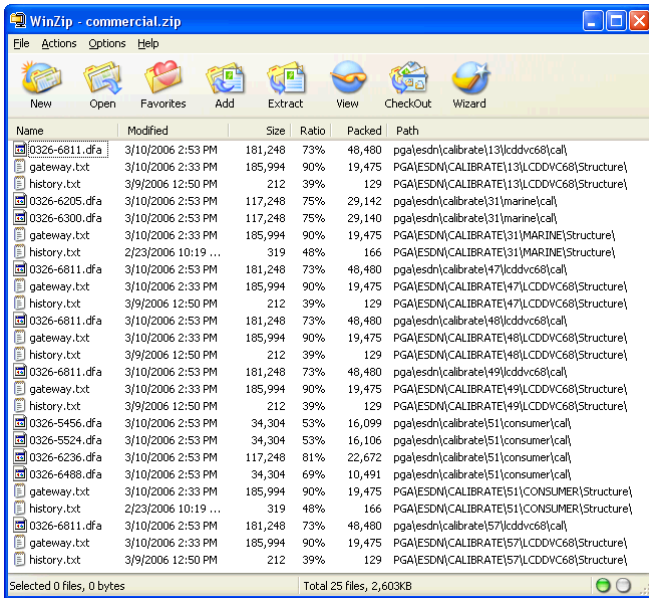


FIGURE 20. WINZIP DIALOG – COMMERCIAL CALIBRATION FILES

Downloading All Calibration Files

To download all calibration files,

1. Select **Download all** on the right side of the screen (see Figure 11).
2. The File Download dialog is displayed. Click on **Save**.
3. The **Save As** dialog is displayed. If you do not wish to have the files saved at the default location, navigate to the desired location. Click on **Save**.
4. The **Download complete** dialog is displayed. Click on **Open**.
5. The **WinZip Pro – all.zip** dialog is displayed. Click on **Extract**. When downloading, a dialog is displayed showing the status of the download (see Figure 21).
6. Use the Folders/drives portion of the **Extract** dialog to navigate to the D drive (see Figure 15). Make sure

“Use folder names” is checked. Click on the **Extract** icon.

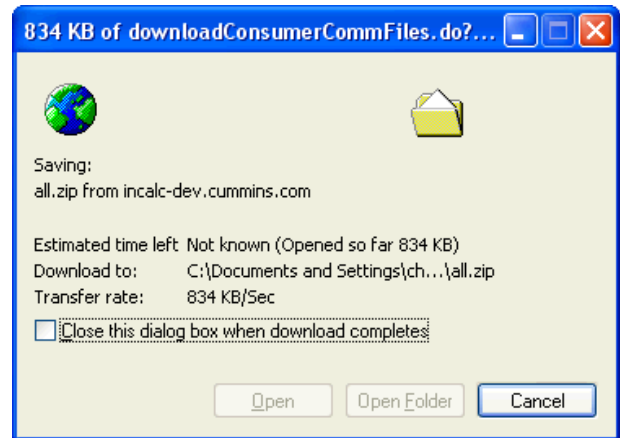


FIGURE 21. DOWNLOAD IN PROCESS DIALOG FOR CONSUMER CALIBRATION FILES

The INCAL CD location can be verified in InPower by clicking on the **Port** menu and clicking on **Find InCal** (Figure 22). Select INCAL CD drive designation from the drop-down list, then click on **Verify INCAL Structure**. A popup message will verify the INCAL location (Figure 23).

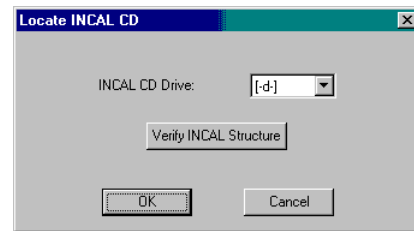


FIGURE 22. FIND INCAL

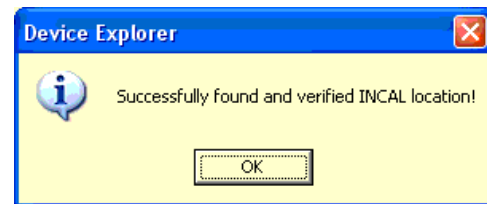


FIGURE 23. INCAL LOCATION FOUND